

# New Challenges for the Swedish NFI



---

Swedish National  
**Forest Inventory**

**Jonas Fridman**

*Demands on data-quality and deliverables*

**Anders Lundström**

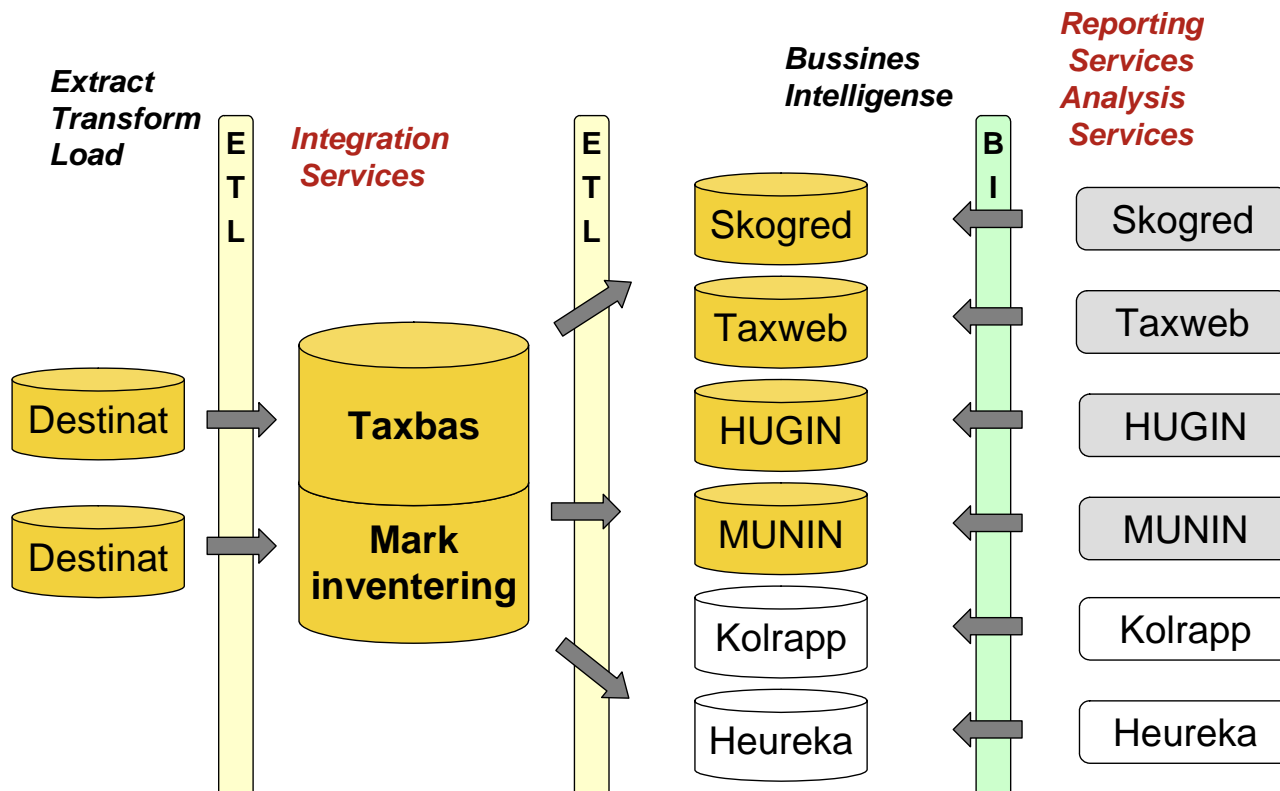
*Forest Resource Scenarios and Wood Balance 2008*

# A general increase in the demands on data quality, content and accessibility from non-traditional clients

- Detailed meta-data
- Estimates for arbitrary areas incl. CV as well as geo-referenced raw data
- Other types of deliverables such as thematic maps or GIS-layers
- Guidelines/algorithms for estimates and CV
- ✓ International, national and regional environmental monitoring
- ✓ Researchers on other Universities than SLU



# Data-warehouse solution for the Swedish NFI and the Swedish Forest Soil Inventory



# TAX-webb: An application for customised estimates on NFI-data on the web

The screenshot displays the TAX-webb application interface with several search filters:

- Sökning på en variabel** (Search on one variable) with a dropdown arrow and a [Mer info](#) link.
- Alla variabelkategorier** (All variable categories) with a dropdown arrow and a [Mer info](#) link.
- Välj kolumnvariabel** (Select column variable) with a dropdown arrow, a [Mer info](#) link, and a sub-section **Välj klass(er) för kolumnvariabel** (Select class(es) for column variable) containing a bar chart with five bars, the first of which is red.
- Välj enhet** (Select unit) with a [Mer info](#) link.
- Välj geografisk områdesindelning** (Select geographic area division) with a dropdown arrow, a [Mer info](#) link, and a sub-section **Välj område(n)** (Select area(s)) containing a bar chart with five bars, the first of which is red.
- Välj tidsperiodens längd** (Select length of time period) with a dropdown arrow and a [Mer info](#) link.
- Välj tidsperiod** (Select time period) with a dropdown arrow.

# Integrated inventory with synchronisation into a common SQL-server DB

Team-leader FPC



NFI-FPC



SI-FPC

# Prioritization of data-collection in order to meet the demands

- 7) Raw-data for researchers
- 6) Customized estimates
- 5) Data, estimates and analysis for "climate change" monitoring (e.g. LULUC F)
- 4) Data, estimates and analysis for evaluation of the Swedish forest policy
- 3) Data, estimates and analysis for evaluation of the National Environmental Objectives
- 2) Estimates for reporting of Official Forest Statistics
- 1) Data as input in national and regional long-term forestry consequence analysis

# Forest Resource Scenarios and Wood Balance 2008

SKA-VB 08



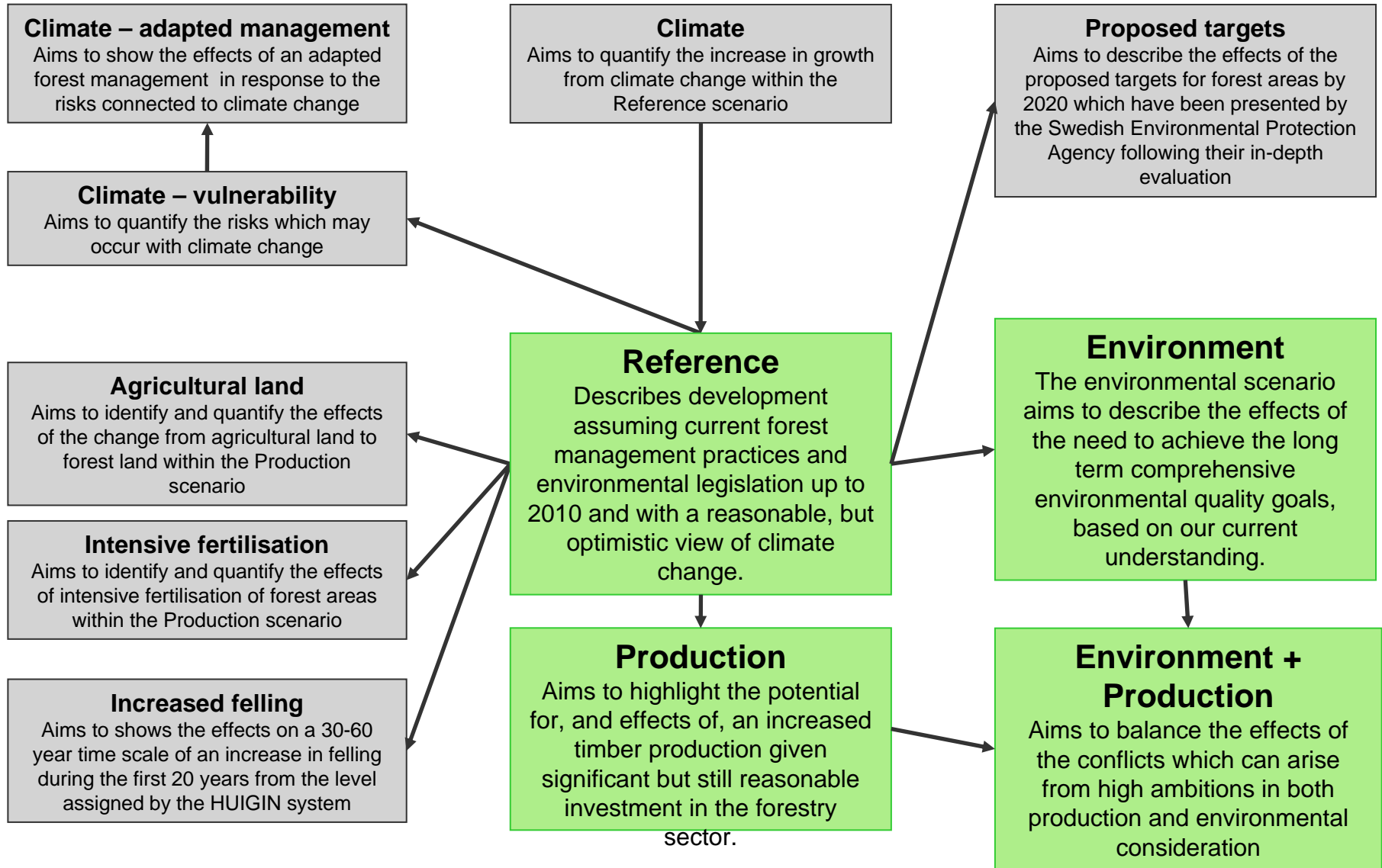
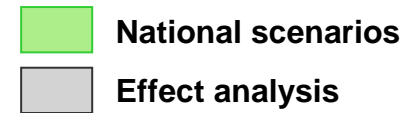
# Questions to answer:

- Land use and balance between forest production, environment and other uses of forest land
- The roll of forest and forestry in energy supply and climate change
- Risk management regarding wind storms and climate change

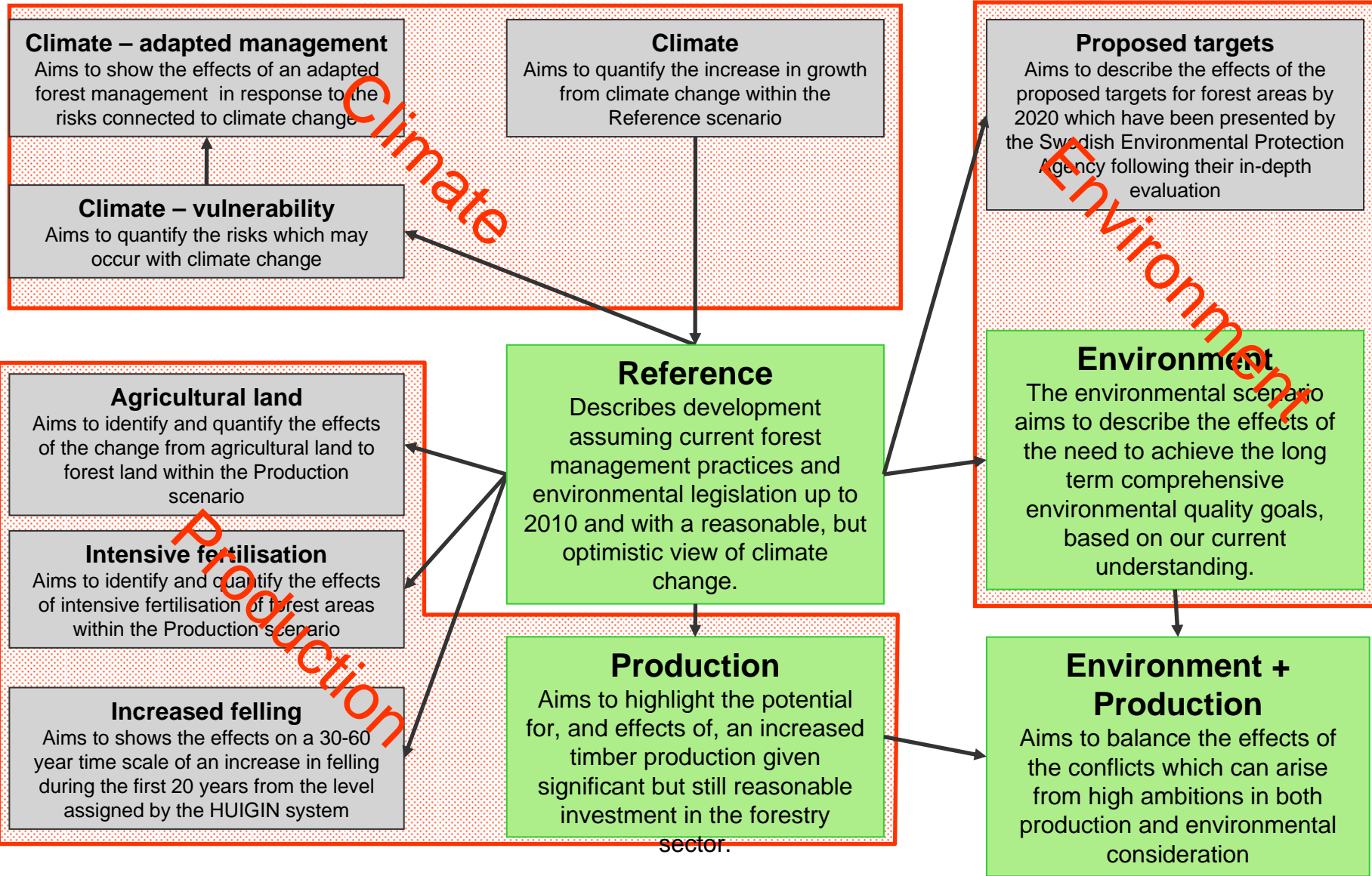
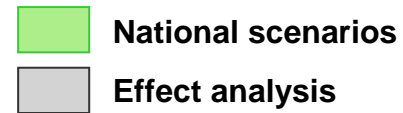




# Scenarios in SKA-VB 08



# Scenarios in SKA-VB 08



# Forest land use

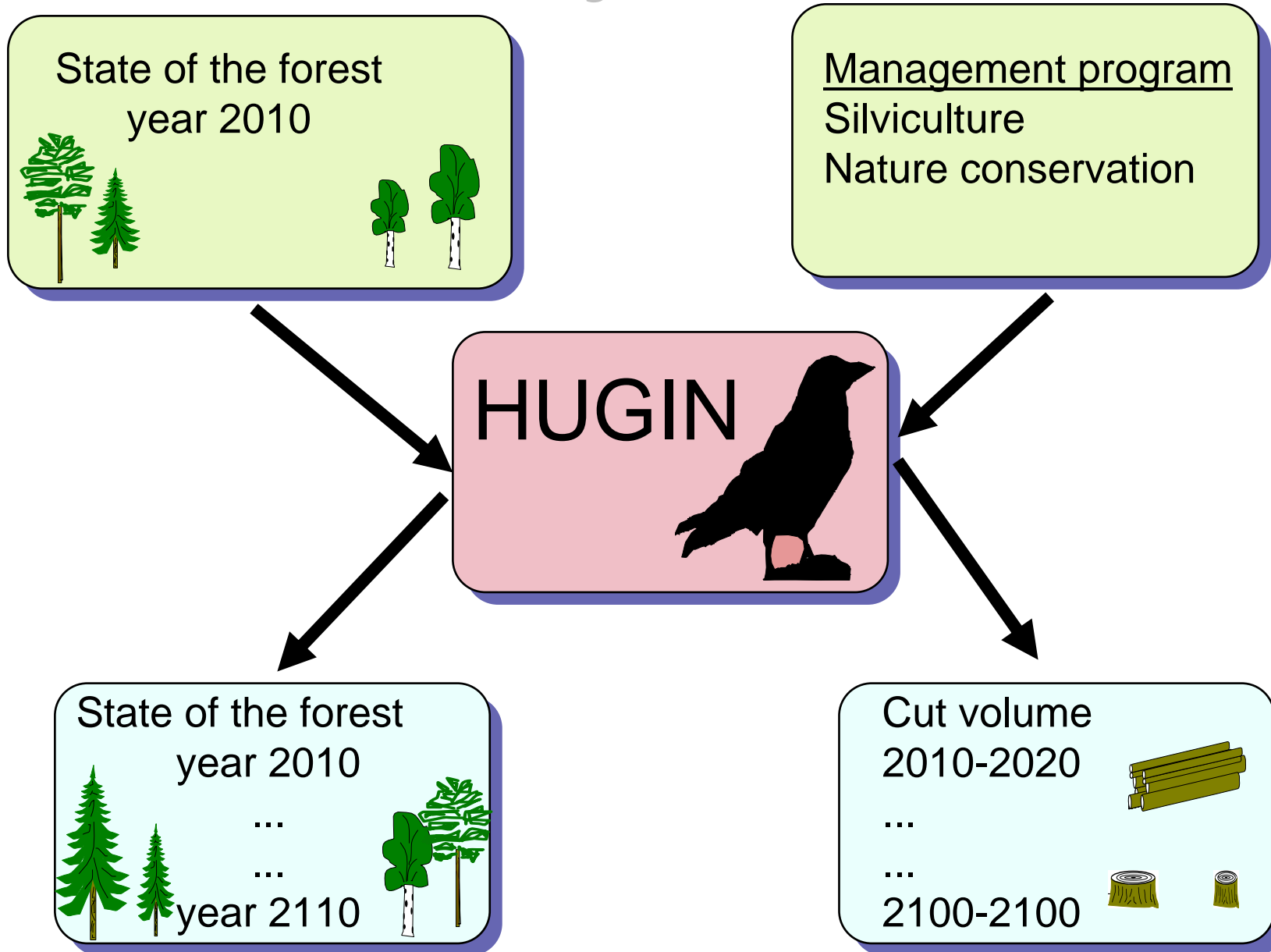
- NFI-data from 2002-2006
  - 23,4 milj ha
- Reference + Production
  - 3 milj ha protected
- Environment
  - 5 milj ha protected



# Calculations

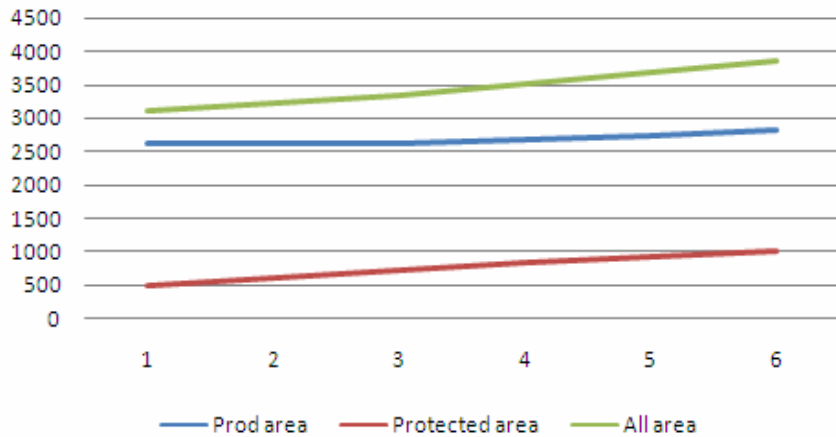
- HUGIN
- Improvements:
  - Effect of Climate change
  - Effect of Breeding

# The HUGIN system

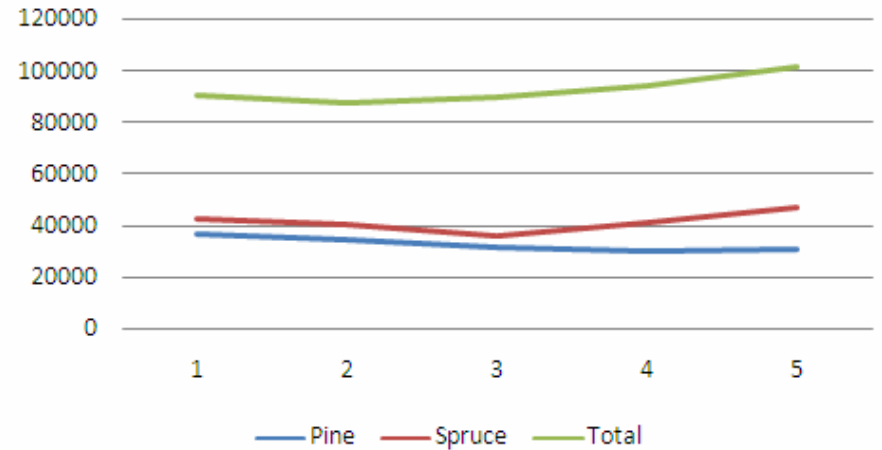


# Preliminary Results

## Growing stock



## Possible cut



# Presentation

- Final report December 2008
  - Forest condition
  - Sustainable harvesting
  - Environmental aspects
  - Forest fuels
  - Carbon balances
  - Risk aspects

