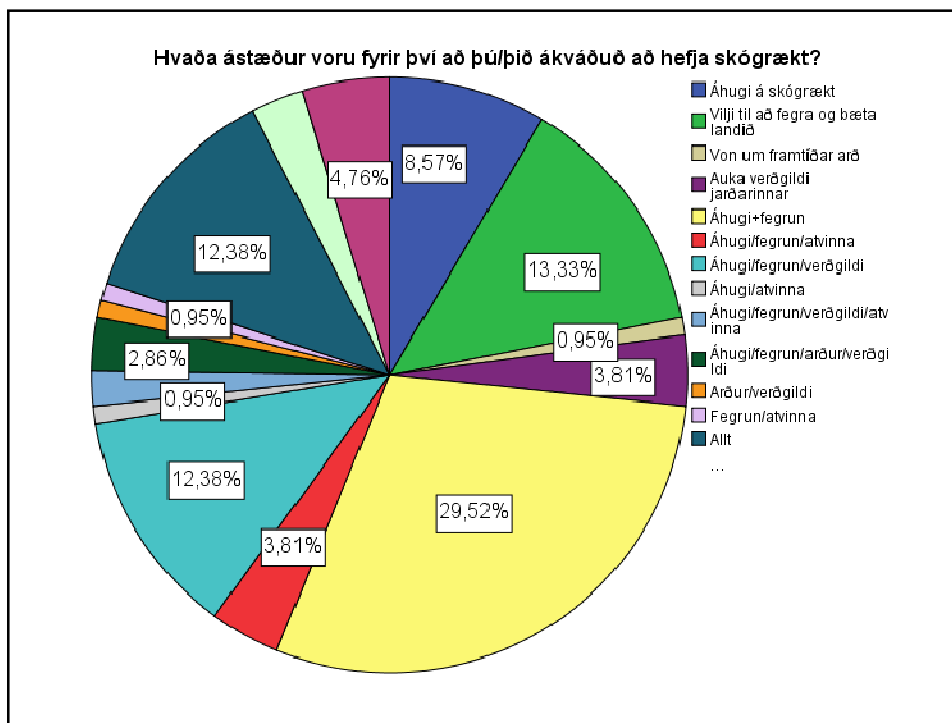
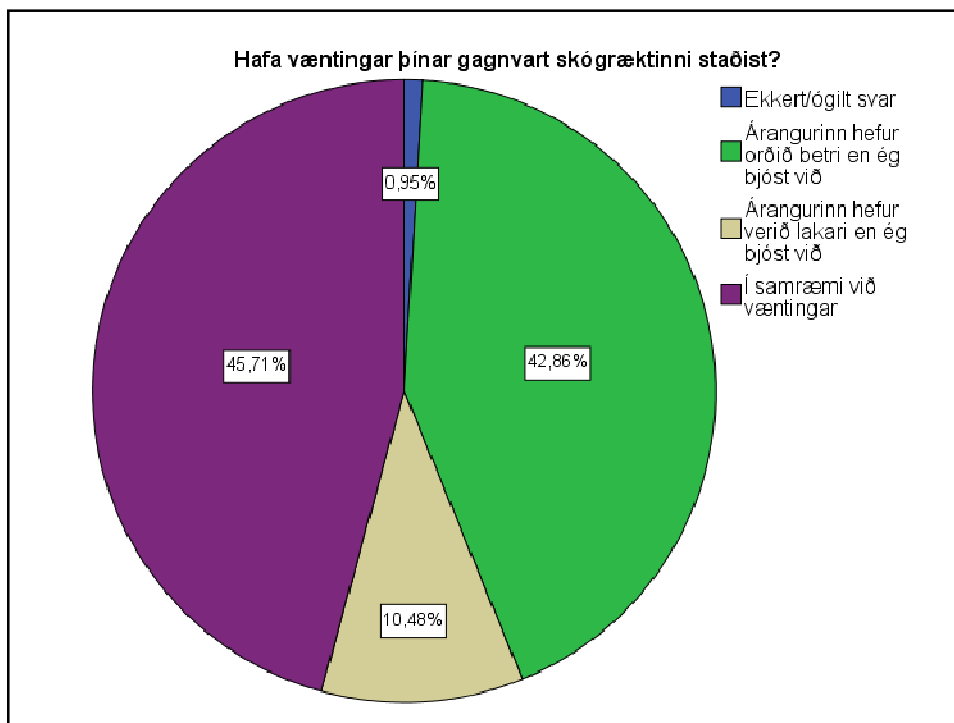
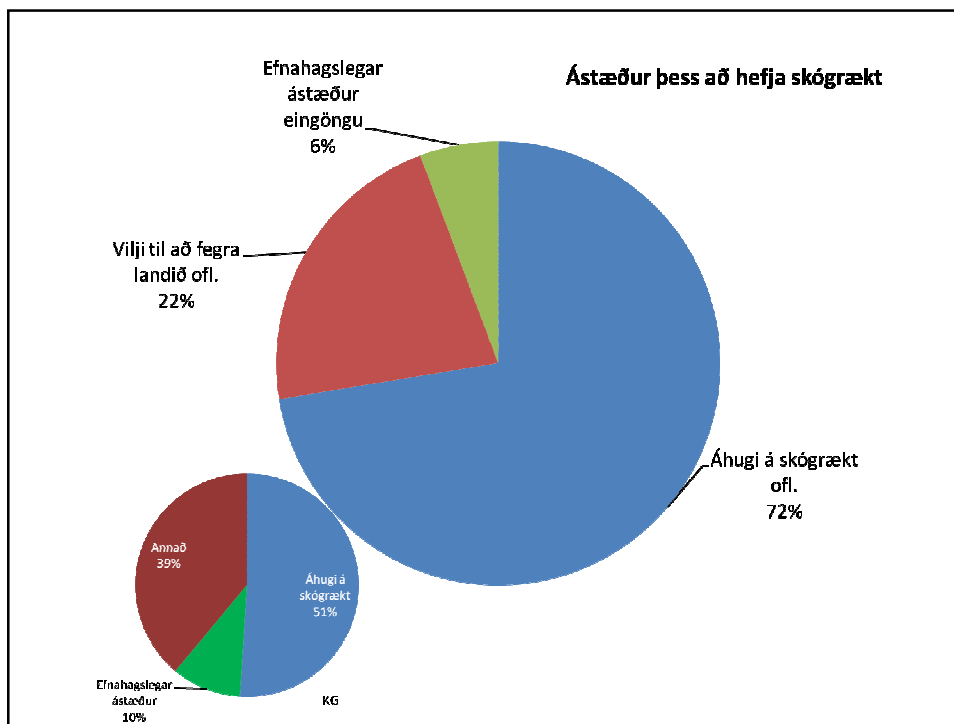
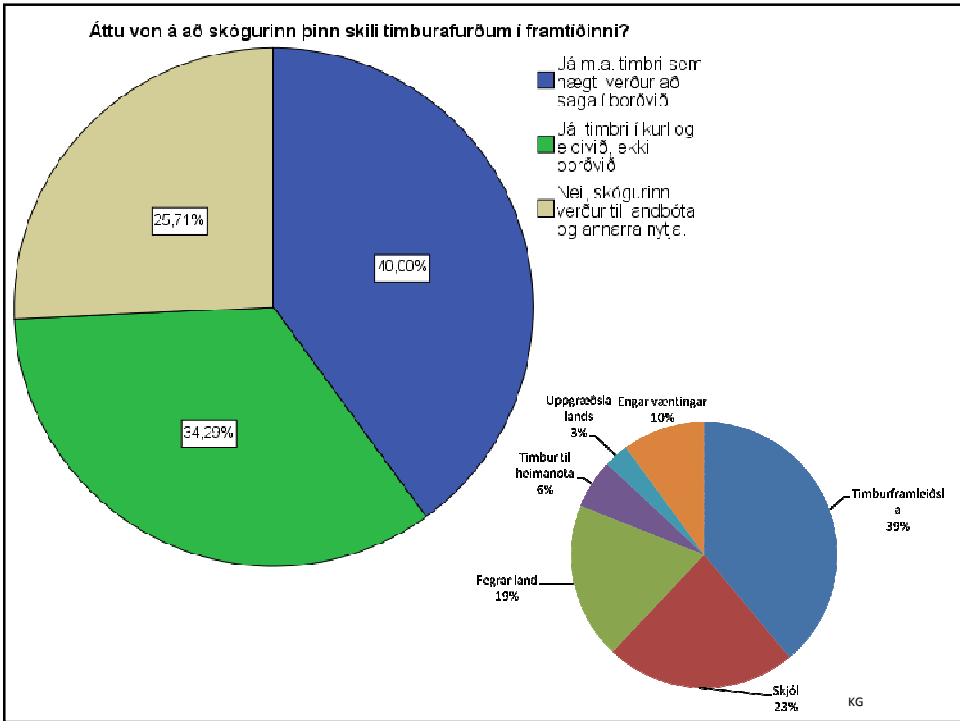
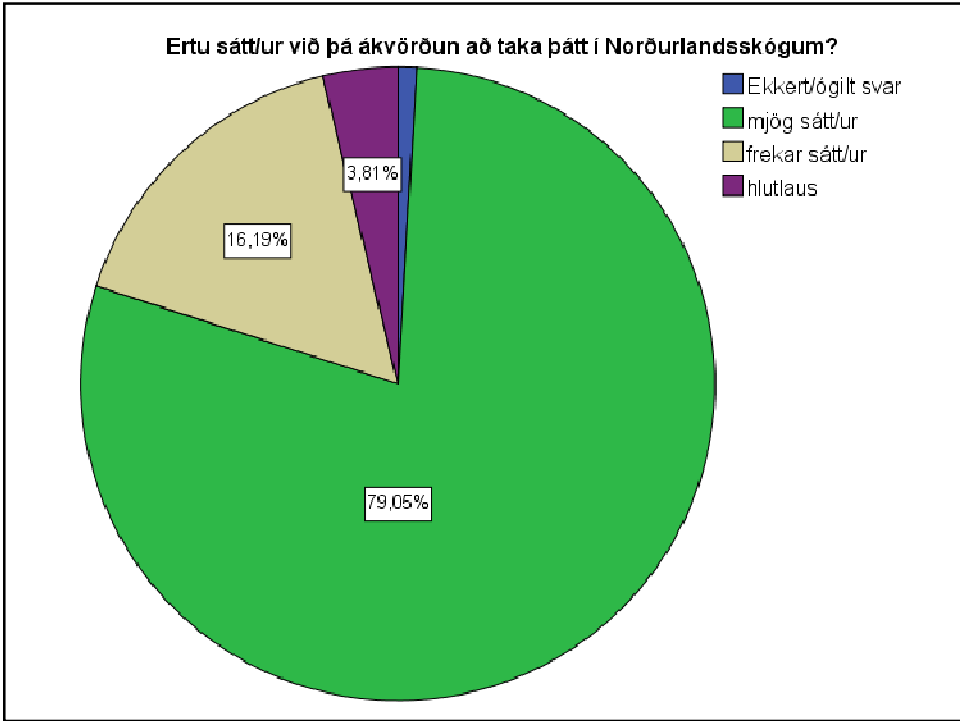


Viðhorf skógarbænda

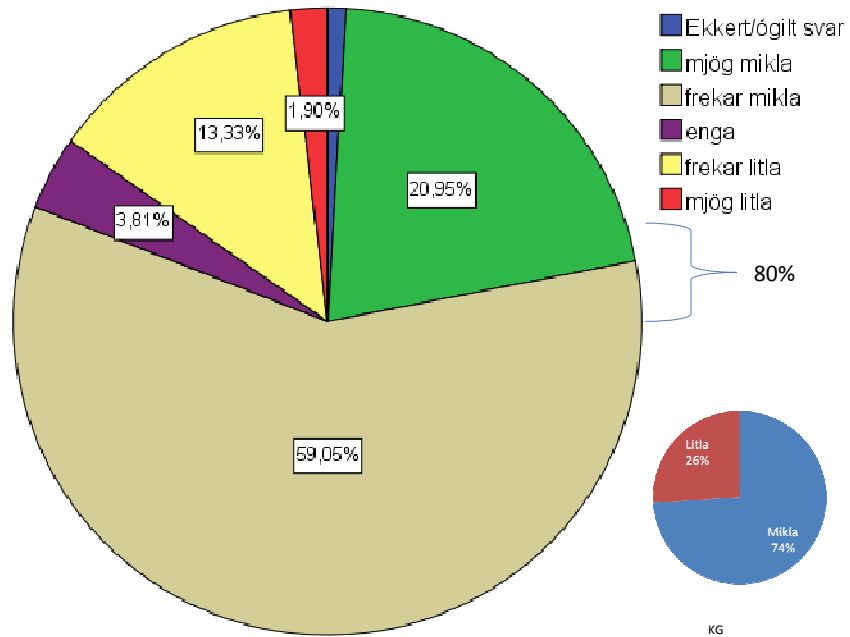
- Viðhorfsskönnun send til 142 skógarbænda í janúar 2011.
- Svör bárust frá 105 eða 74% svörun
- Viðhorfsskönnun HASK gerð árið 2009, á meðal 151 skógarbænda svörun 51%
- Karl Gunnarsson: viðtöl við 31 skógarbónda á Héraði árið 1998 (83 skógarbændur, 37% úrtak)



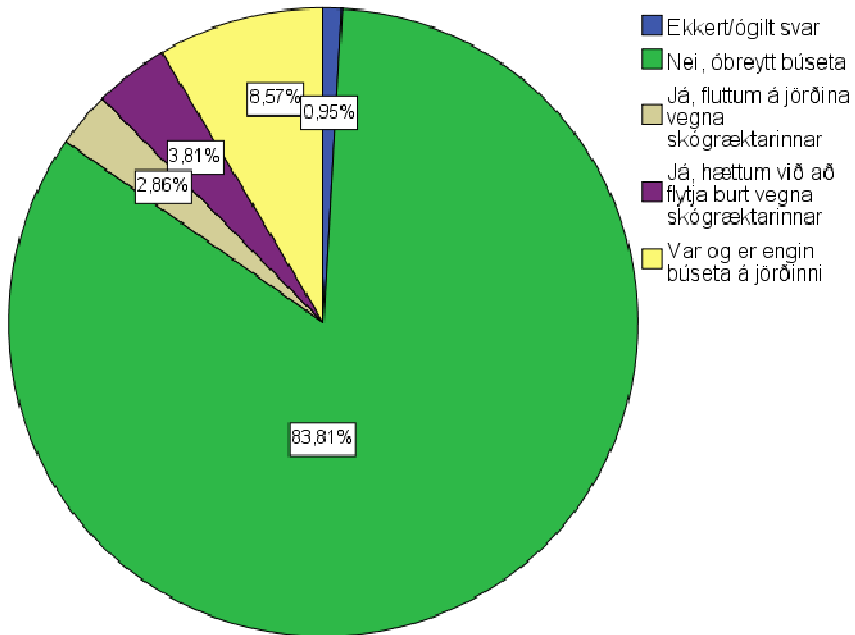


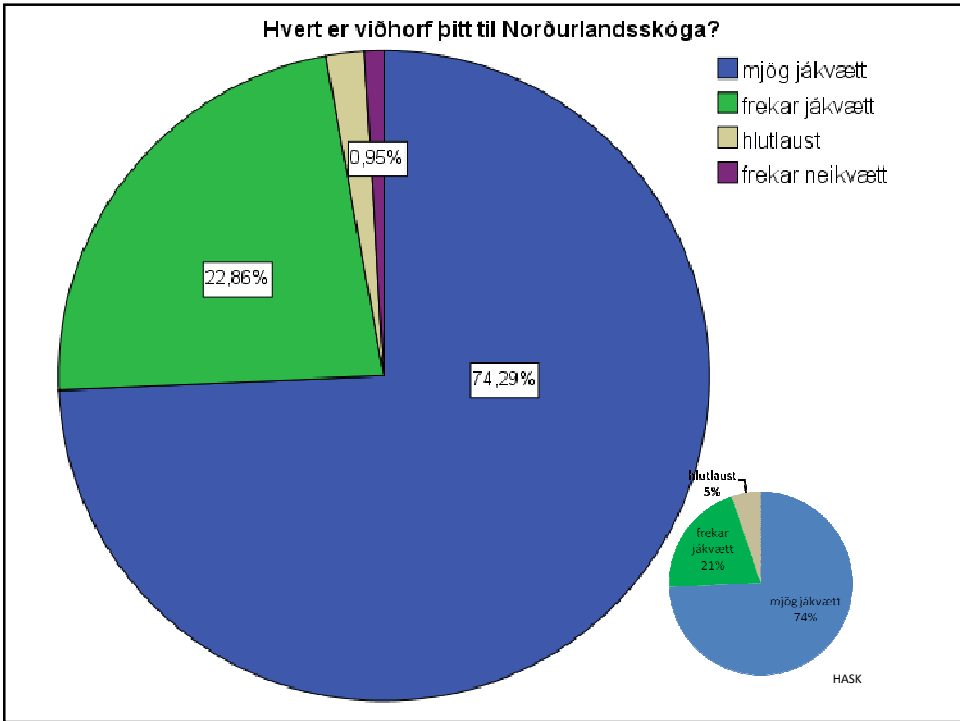
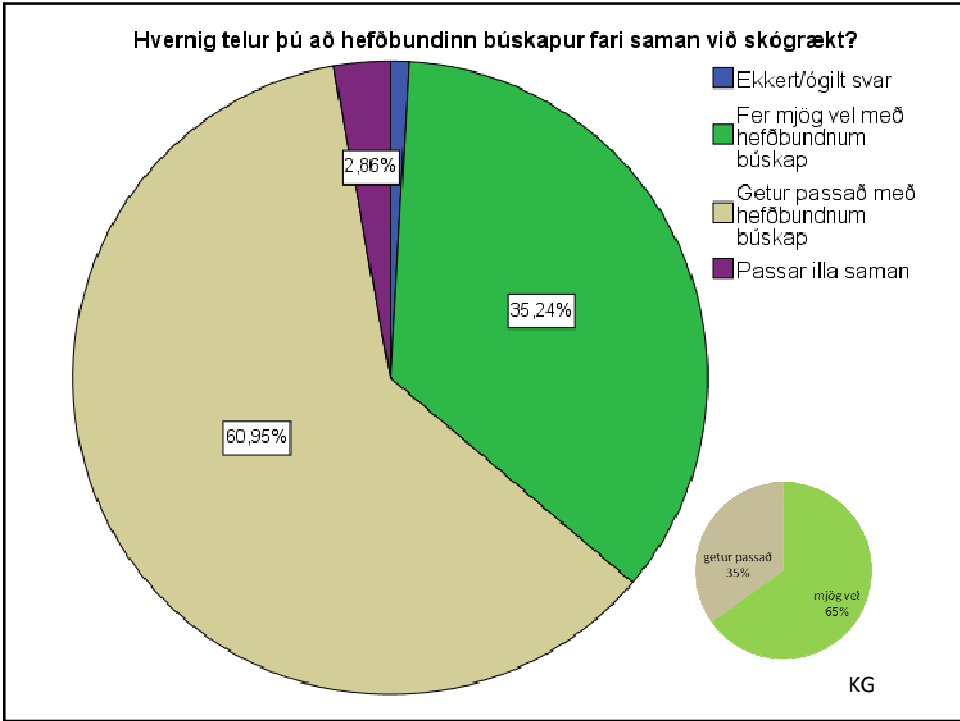


Hversu mikla eða litla trú hefur þú á því að skógrækt verði timburframleiðsluáætlun á Íslandi í framtíðinni?

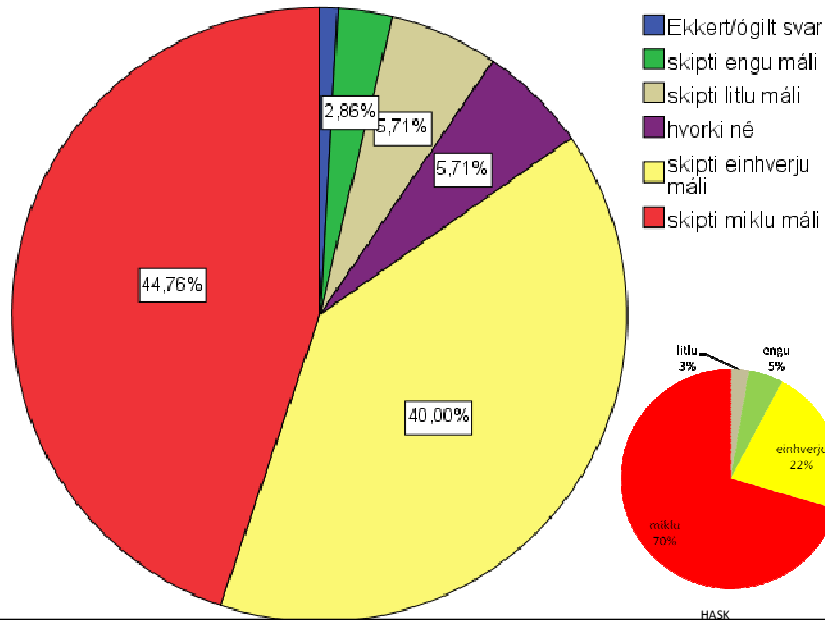


Hefur þátttaka þín/lykkar haft áhrif á búsetu á skógarjörðinni?

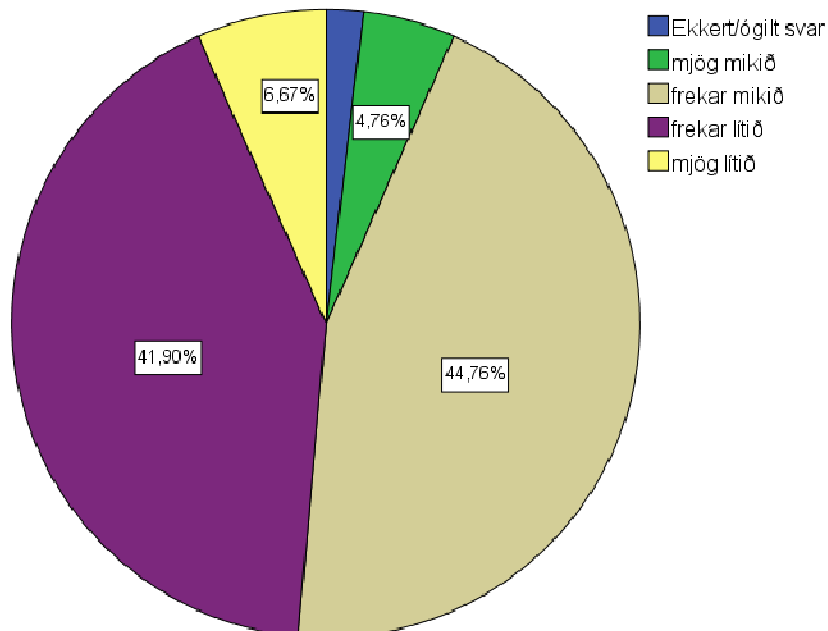


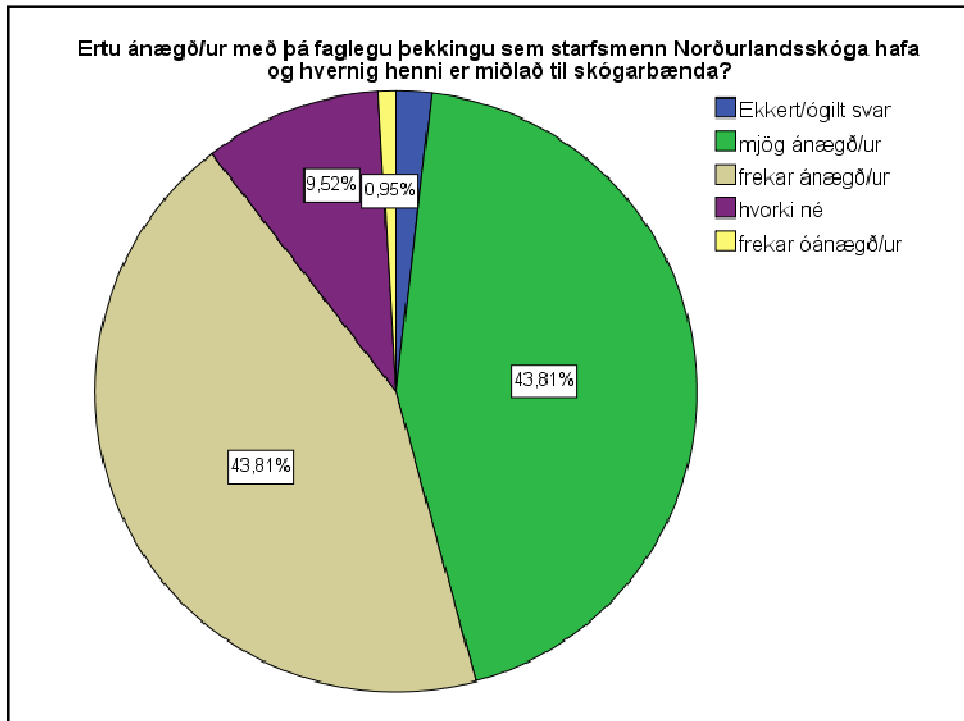
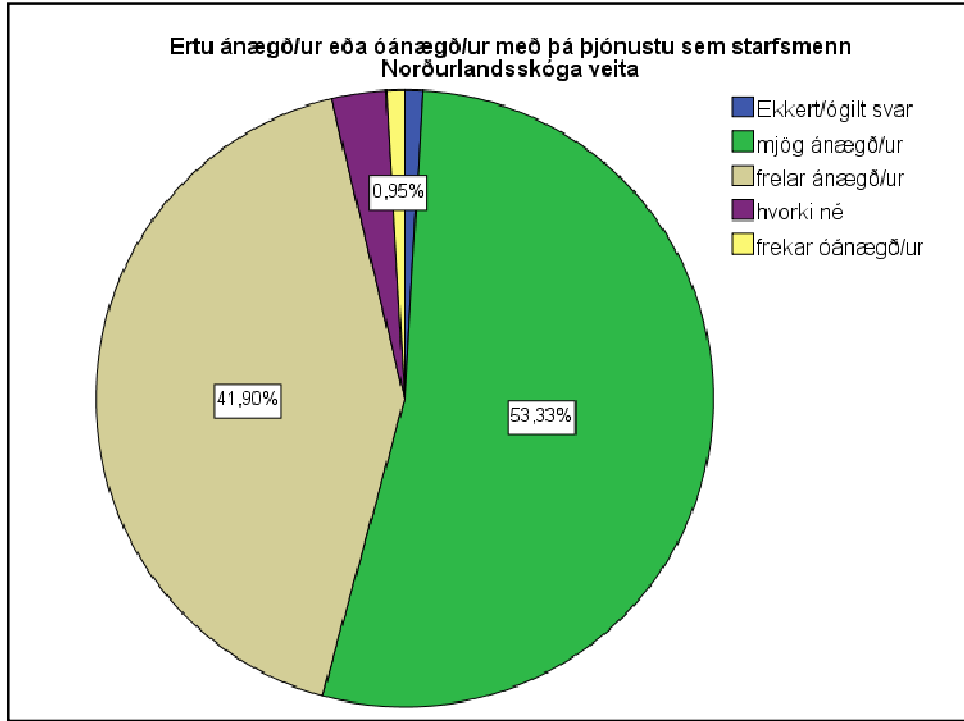


Telur þú að Norðurlandsskógar skipti ekki máli eða skipti máli í byggða- og atvinnuþróun í landsfjórðungnum?

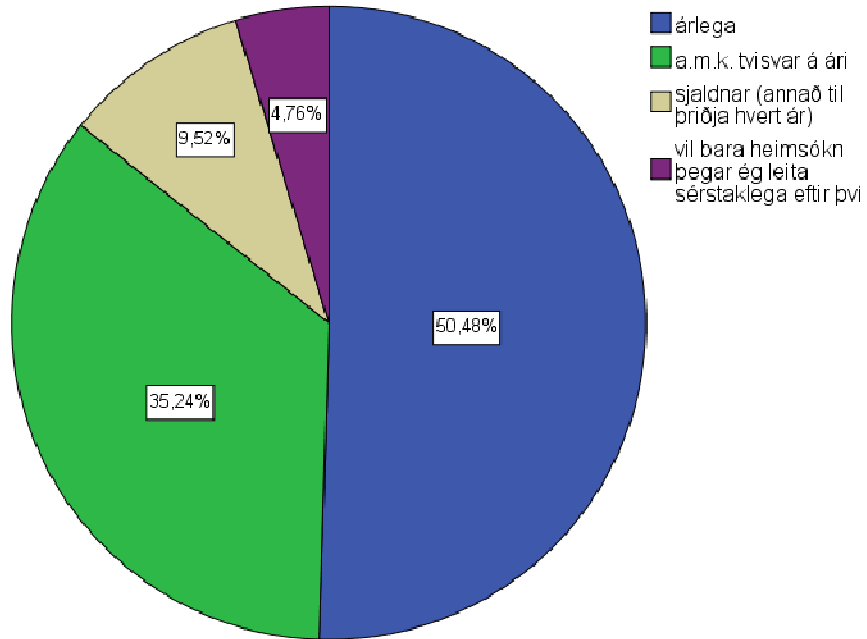


Hversu mikið eða lítið leitar þú til starfsmanna Norðurlandsskóga

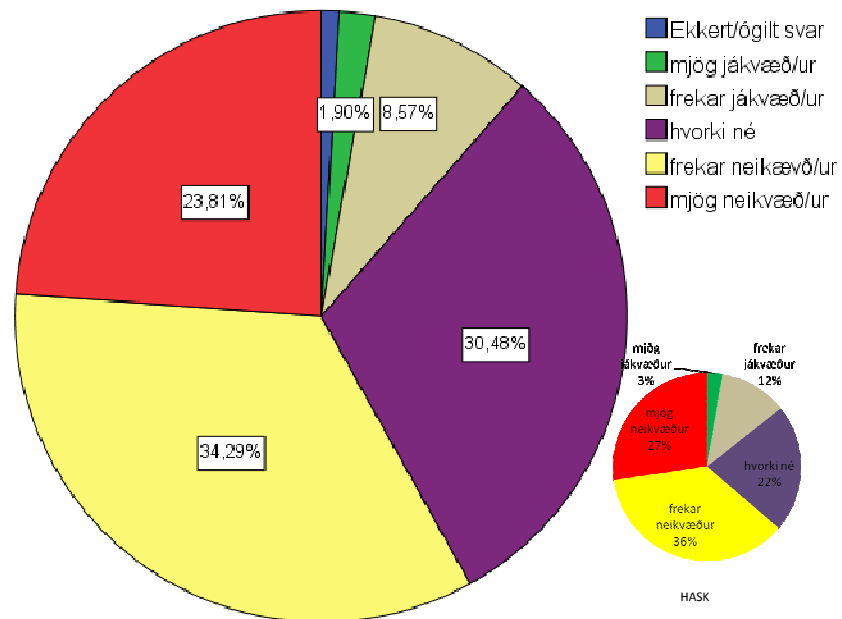




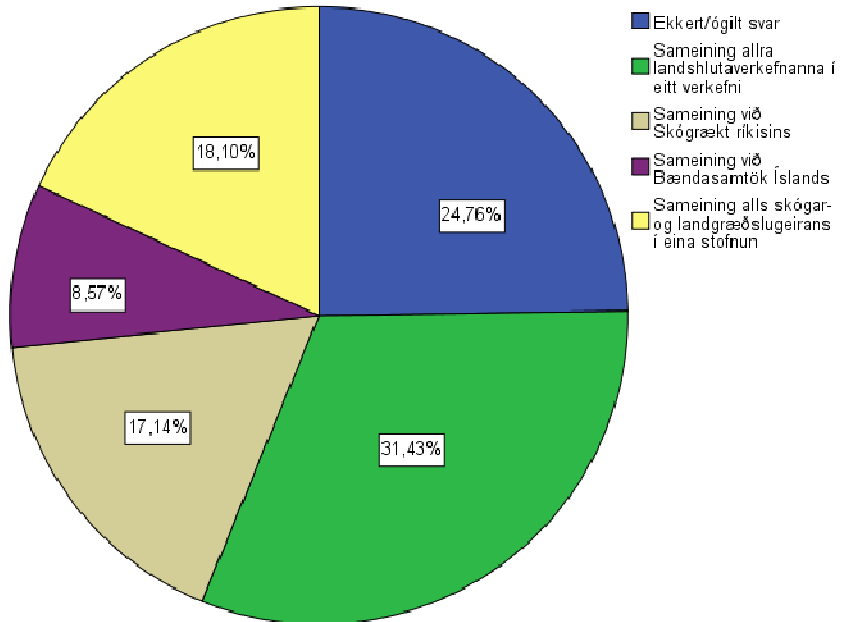
Hversu oft mundir þú vilja fá heimsókn frá starfsmönnum Norðurlandsskóga?



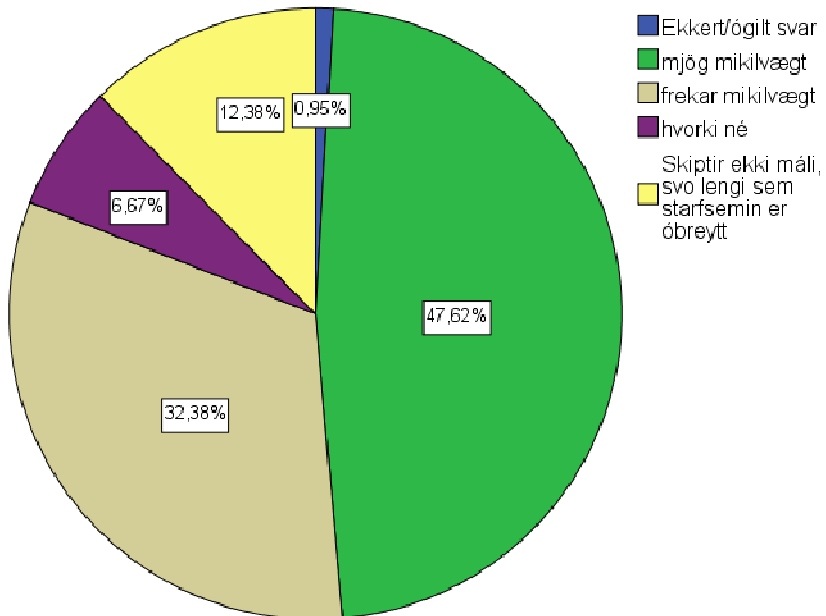
Ertu jákvæður gagnvart mögulegri sameiningu Norðurlandsskóga við aðrar stofnanir/verkefni?



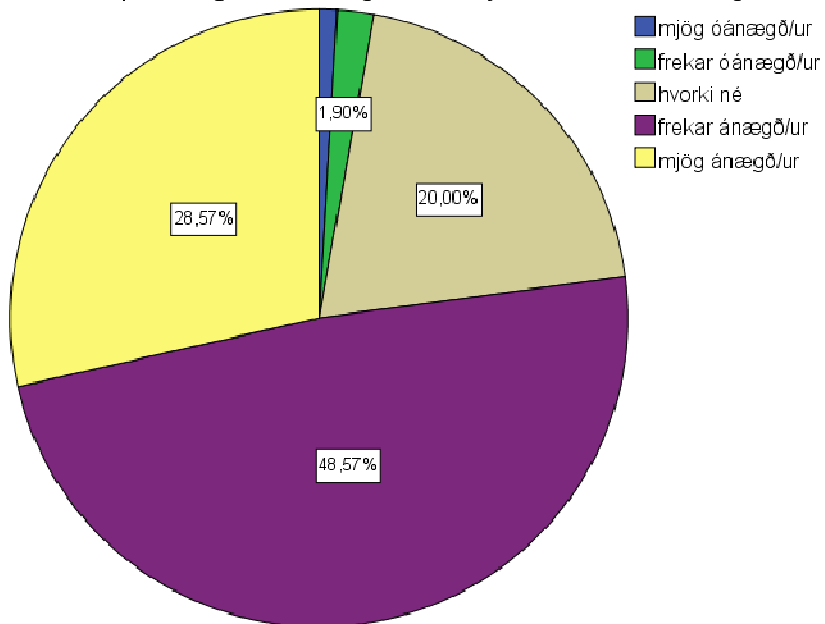
Hvernig sameining mundi hugnast þér best?



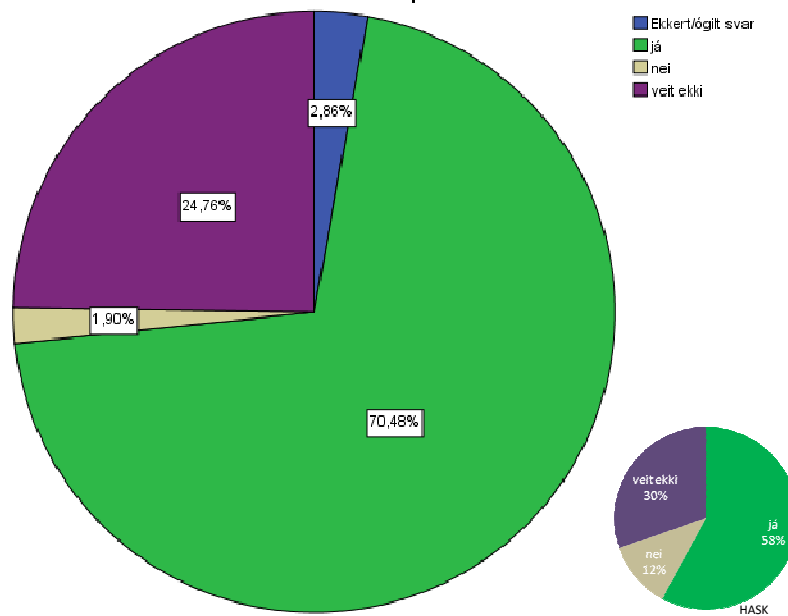
Finnst þér mikilvægt eða ekki mikilvægt að Norðurlandsskógar séu sjálfstætt verkefni og stjórn þess skipuð heimamönnum?



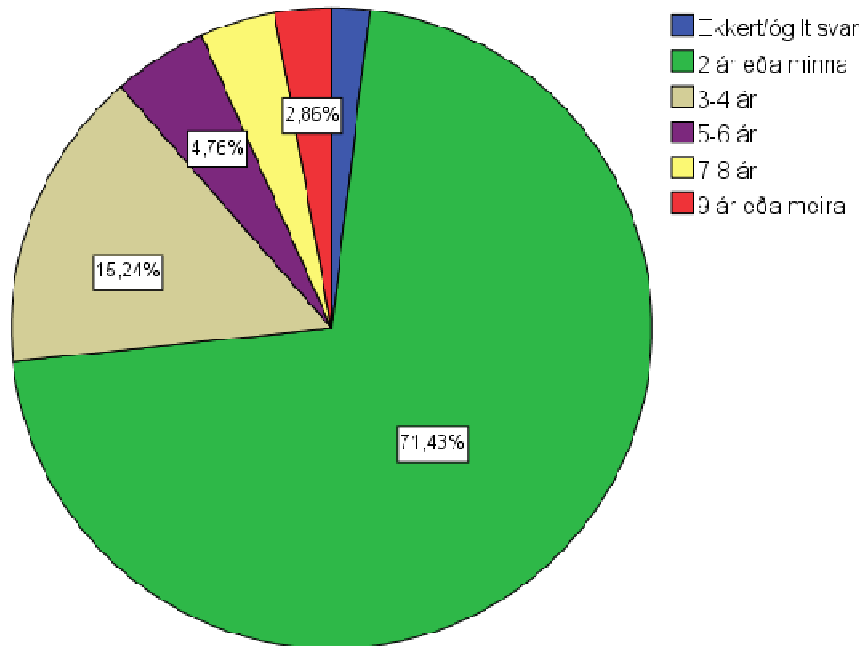
Ert þú óánægð/ur eða ánægð/ur með stjórnun Norðurlandsskóga



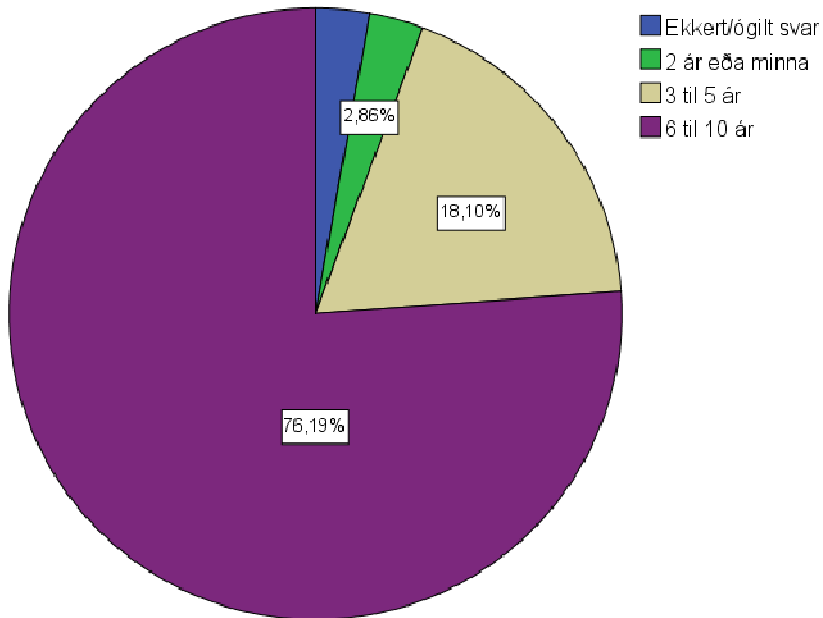
Telur þú að taxtar sem landshlutaverkefni greiða eftir ættu að vera samræmdir á milli þeirra

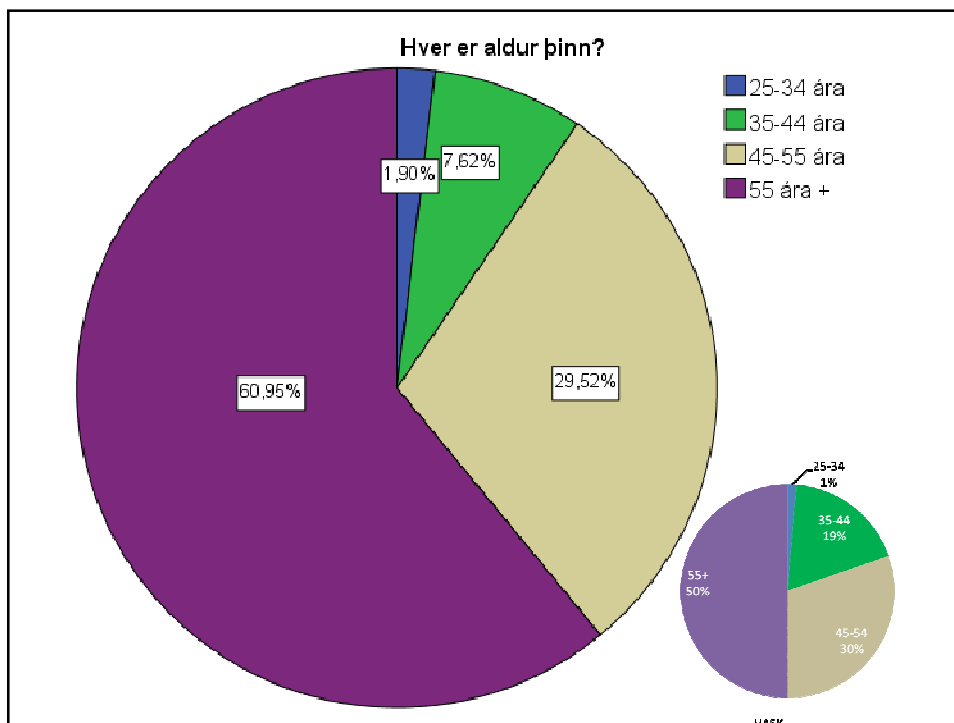
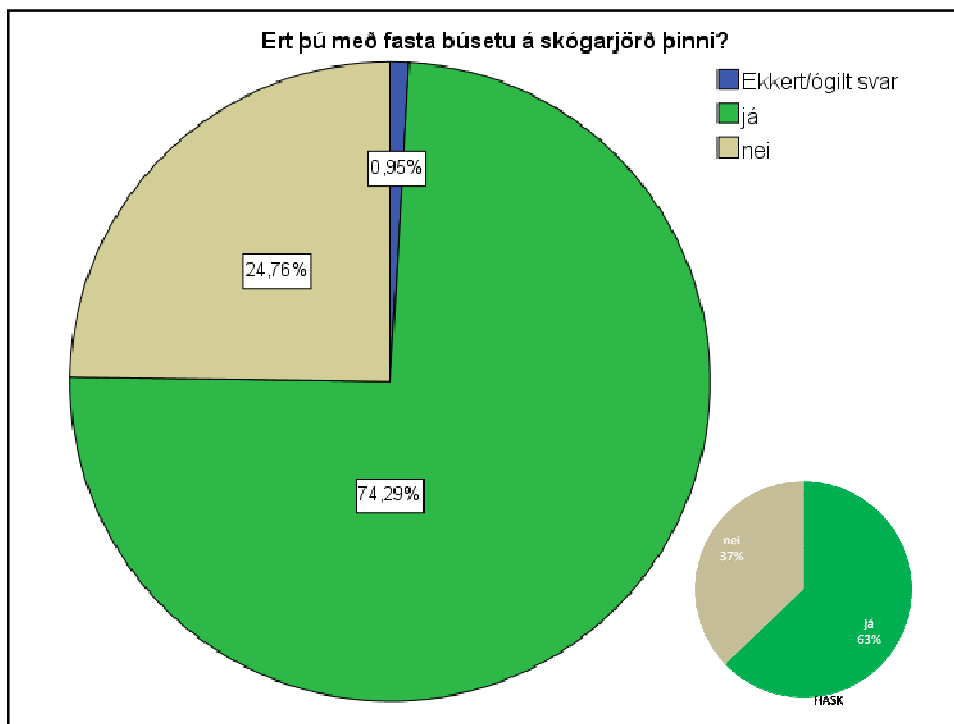


Hversu langt er síðan síðast voru framkvæmdir tengdar skógræktinni á skógarjörð þinni, annað en girðingaviðhald



Hversu langt er síðan gerður var samningur um nytjaskógrækt á jörð þinni við Norðurlandsskóga





Hvar á starfssvæði Norðurlandsskóga er skógarjörð þín?

