

Samanburður á svepprótarmyndun hjá skógarfuru og birki

Edda Sigurdís Oddsdóttir



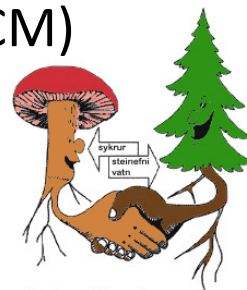
Nýskógrækt á Íslandi

- Eyðing skóga og jarðvegseyðing
- Þekja skóga fór úr ca 25% í 1.5%
- Um það bil 5.5 milljón plantna gróðursettar árlega
 - Birki (*Betula pubescens*) ca. 1/3
 - Skógarfura lítið notuð
- Ógróin svæði
- Mikil afföll plantna
 - Skortur á næringarefnum
 - Frostlyfting
 - Ranabjöllur (*Otiorhynchus nodosus/arcticus*)

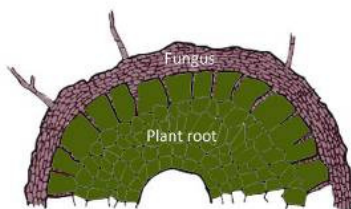


Útræn svepprót (ECM)

- Samlífi milli svepps og plönturótar
 - Sveppur fær orku
 - Plantan fær næringarefni og vatn



<http://www.waldwissen.net>



Þverskurður af útrænni svepprót



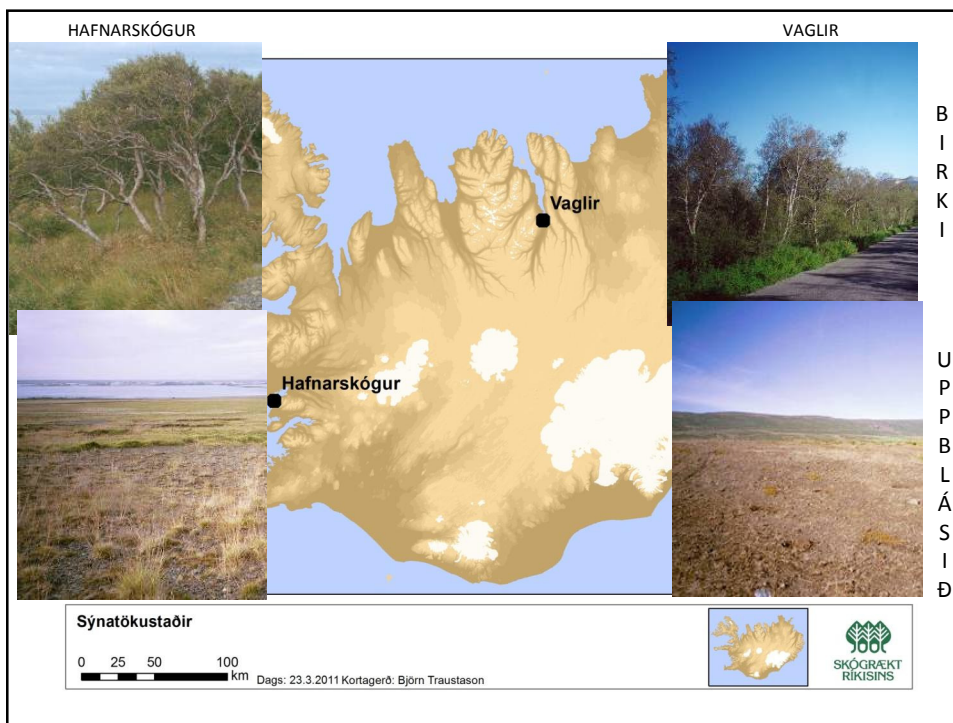
Fura



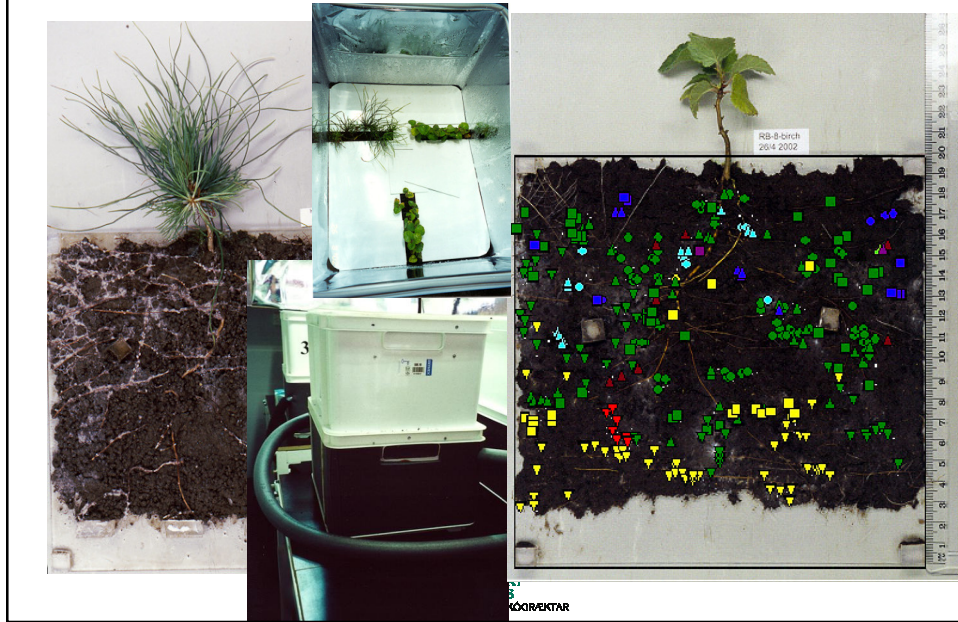
Birkí



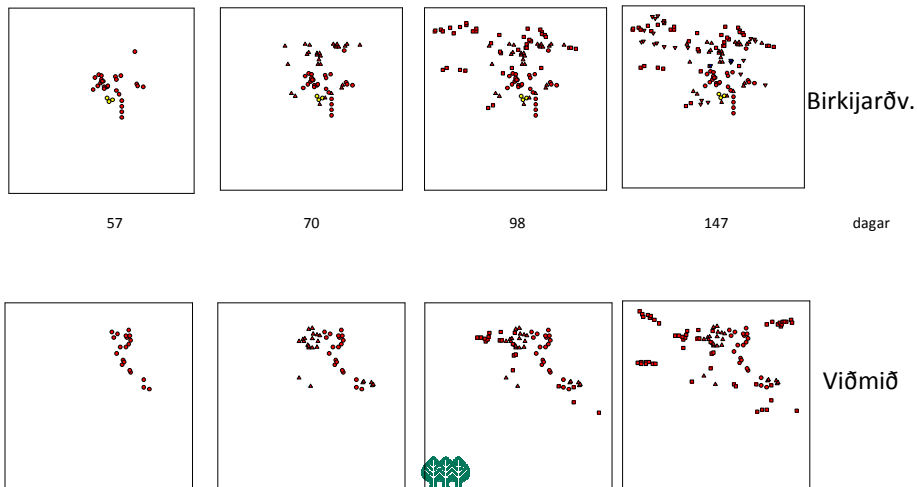
Útræn svepprót á furu og birkirótum
SKÓGRÆKT RÍKSINS
FRANNSKÖMNASTÓÐ SKÓGRÆMANTAR VÉLÍKA



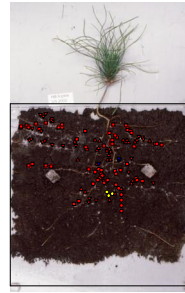
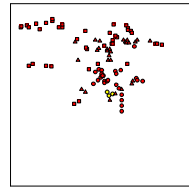
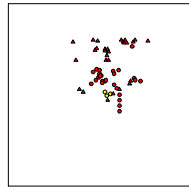
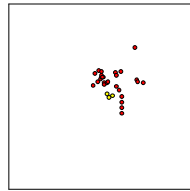
Örvistir



Þróun svepprótar á furu

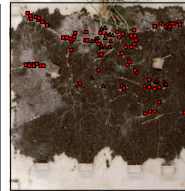
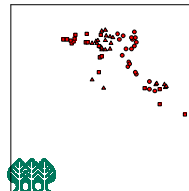
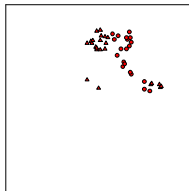
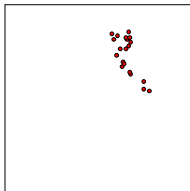


Þróun svepprótar á furu



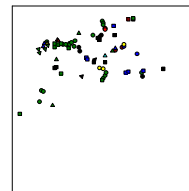
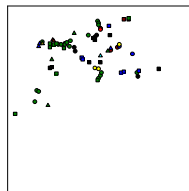
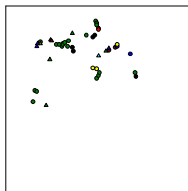
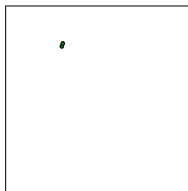
Birkijarðv.

dagar



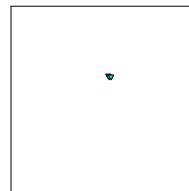
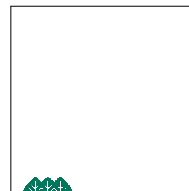
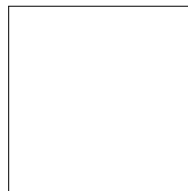
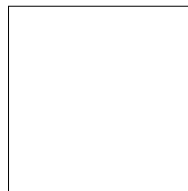
Viðmið

Þróun svepprótar á birki



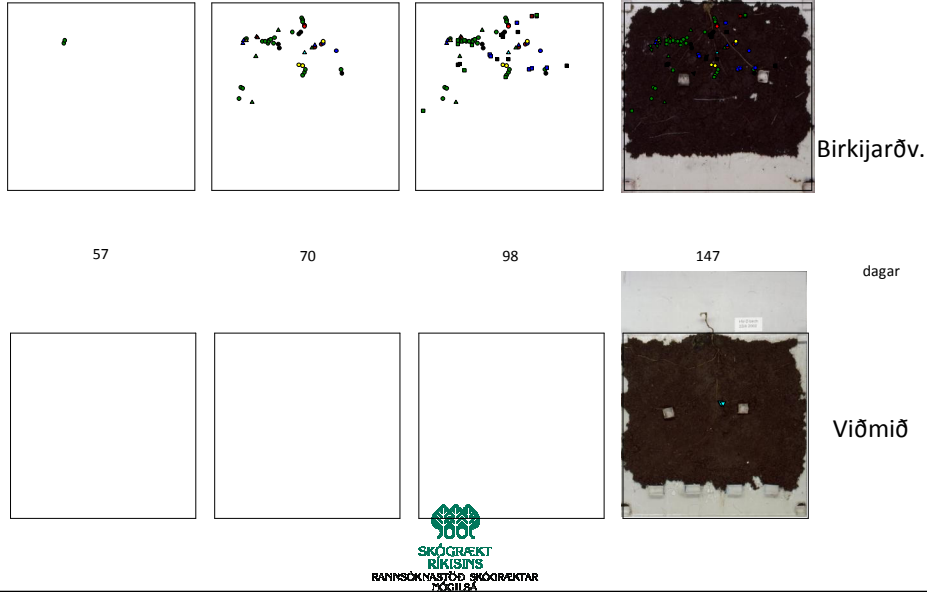
Birkijarðv.

dagar

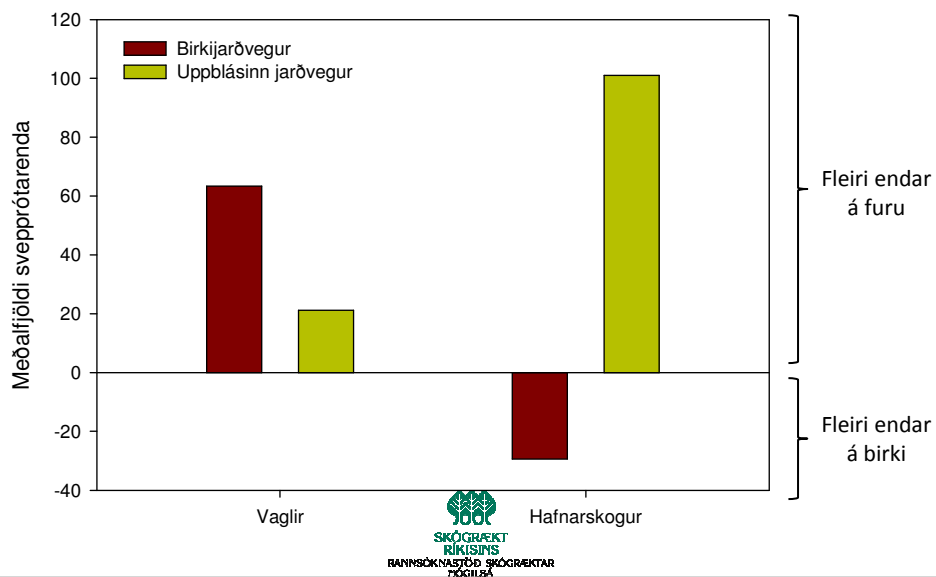


Viðmið

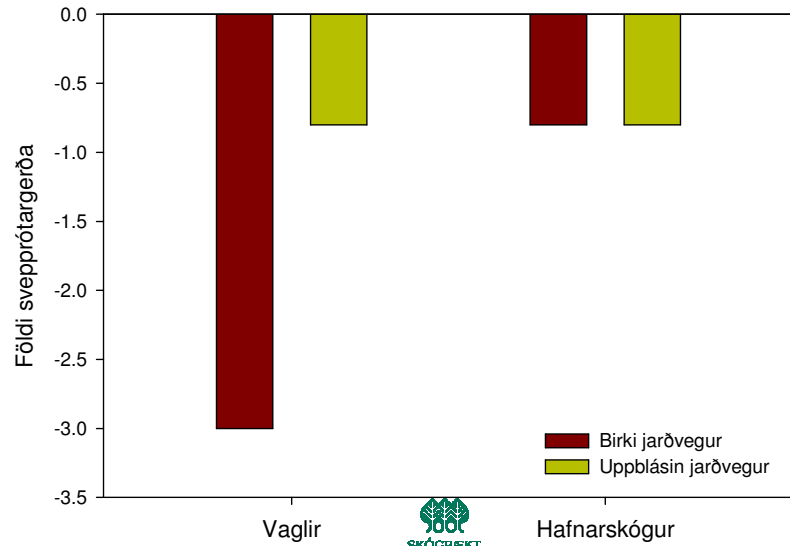
Þróun svepprótar á birki



Munur á meðalfjölda svepprótarenda milli furu (+) og birkis (-)

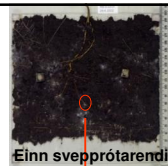


Munur á meðalfjölda svepprótargerða milli birkis og furu



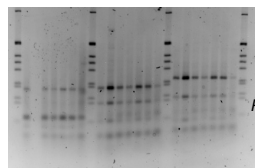
Fleiri gerðir á birki

FURA

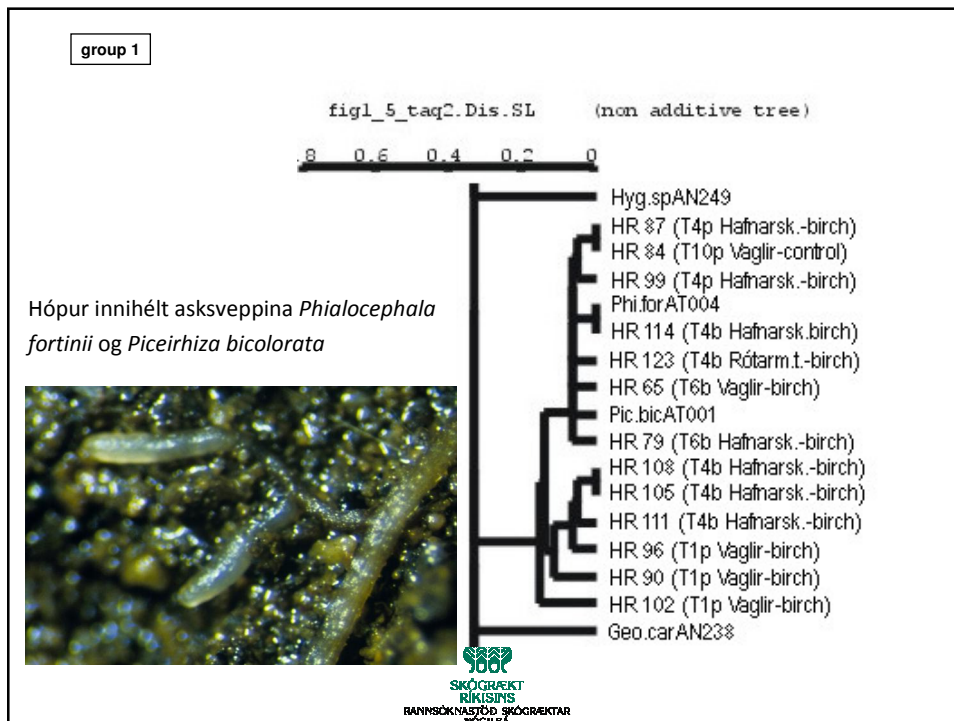
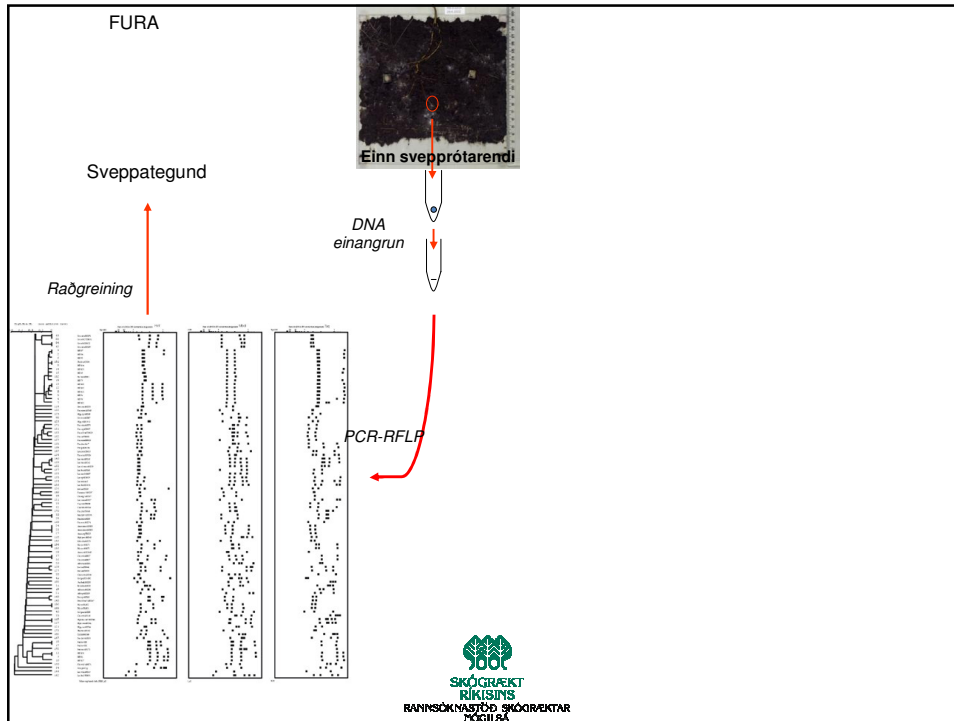


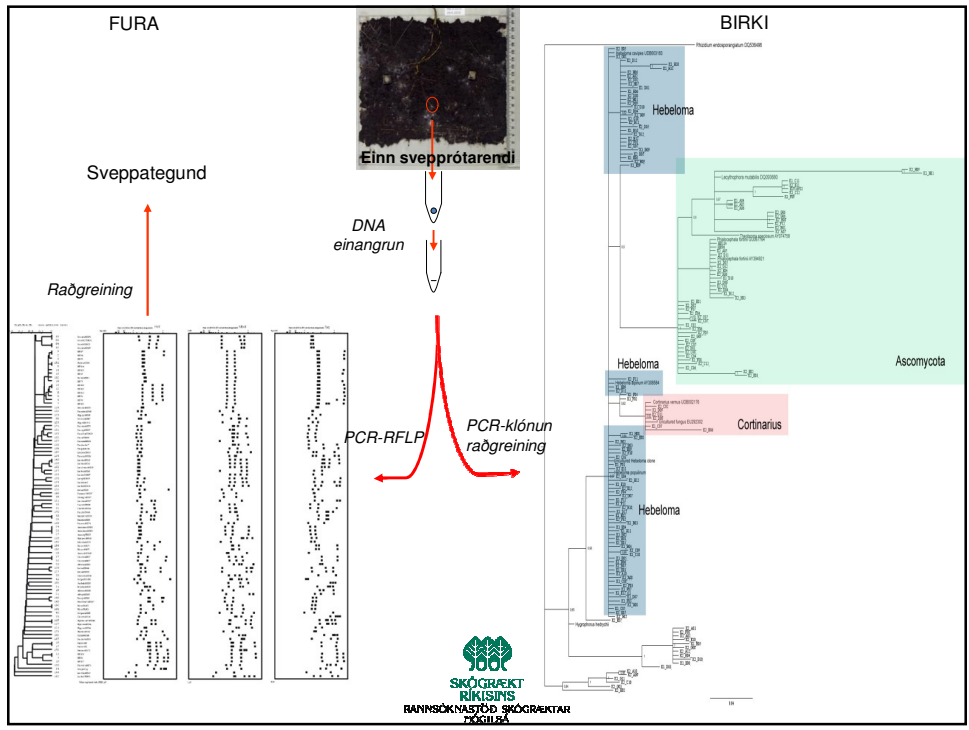
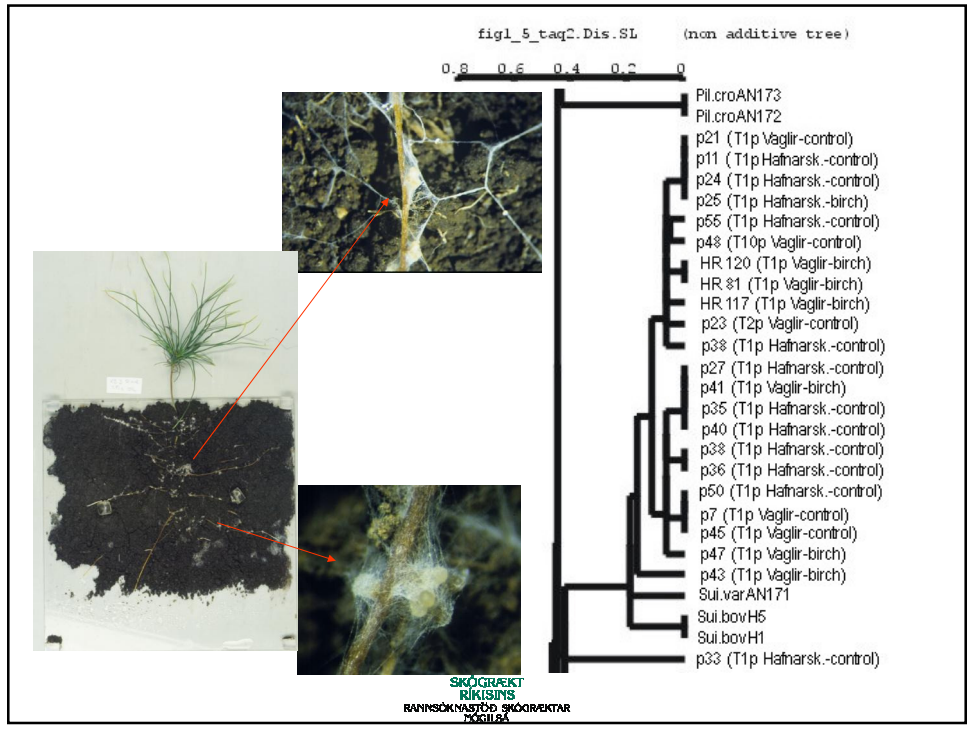
DNA einangrun

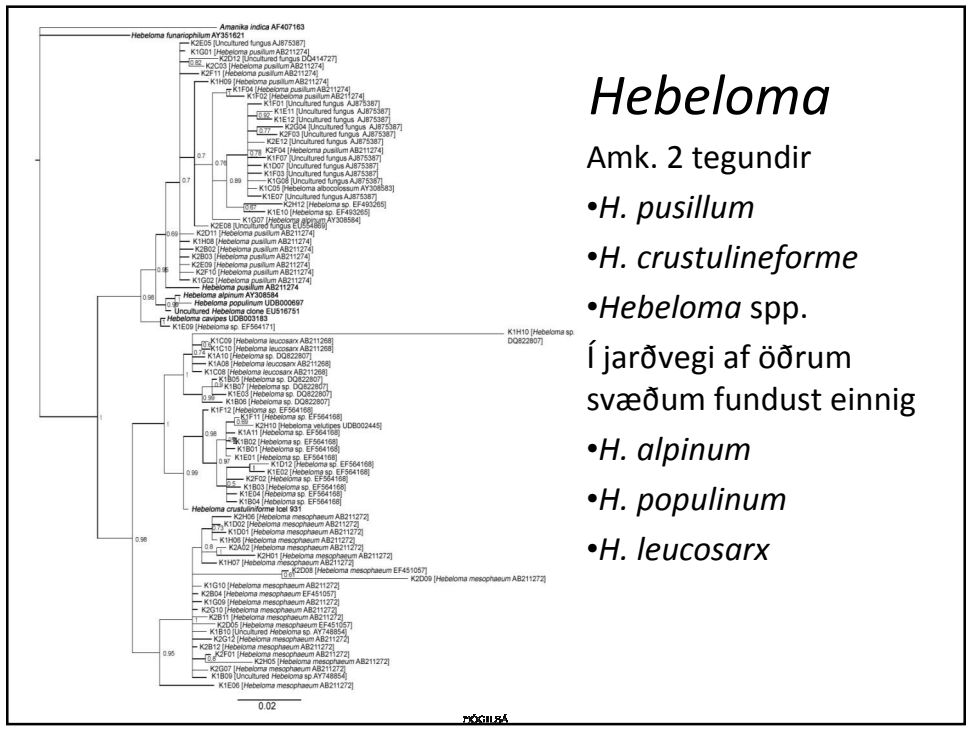
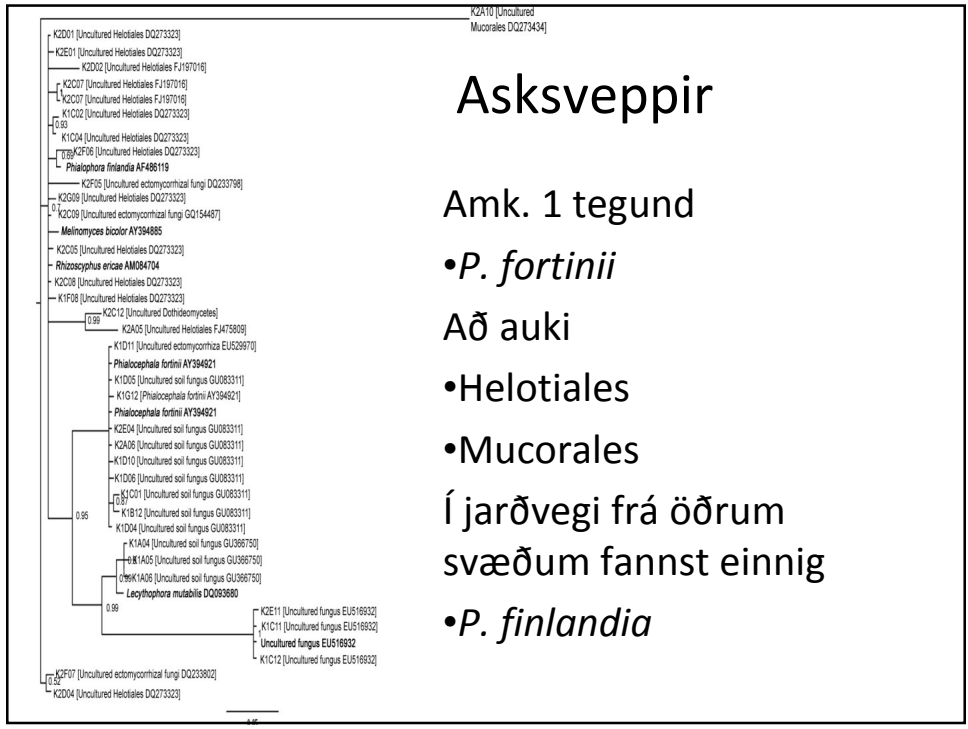
Raðgreining



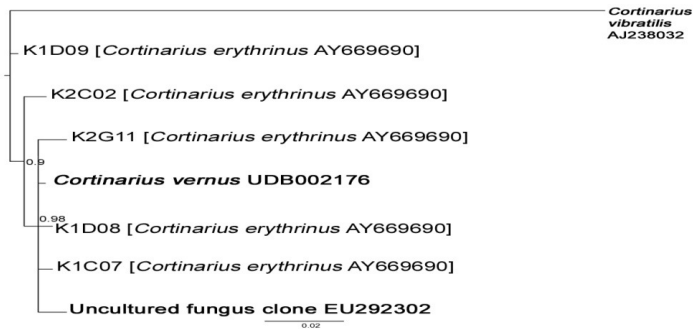
PCR-RFLP







Cortinarius



1 tegund

- *C. erythrinus*



Svepprótartegundir

Fura

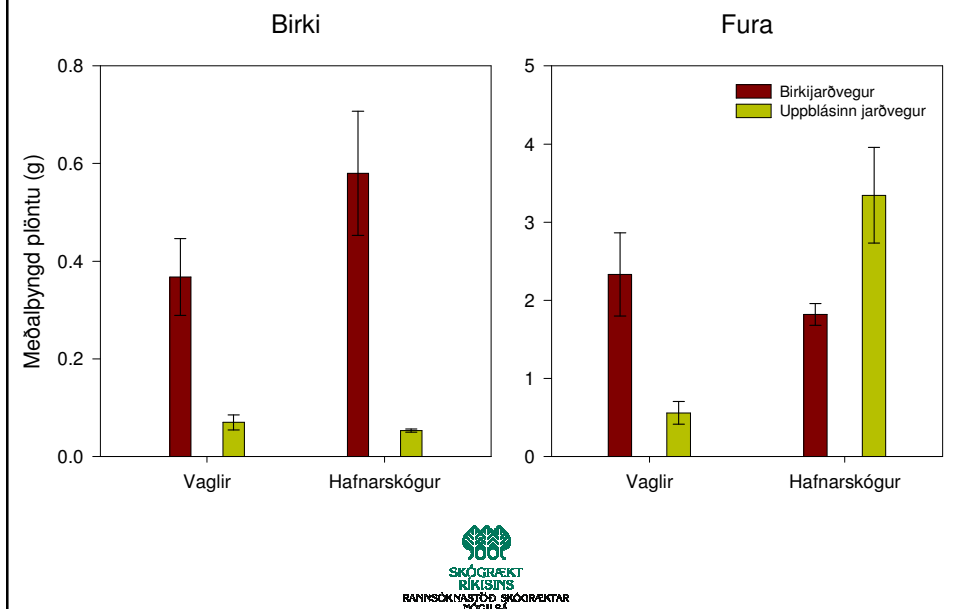
- *Suillus luteus* (furusveppur) ríkjandi
- *Phialocephala fortinii* og/eða *Piceirhiza bicolorata* í litlu mæli

Birki

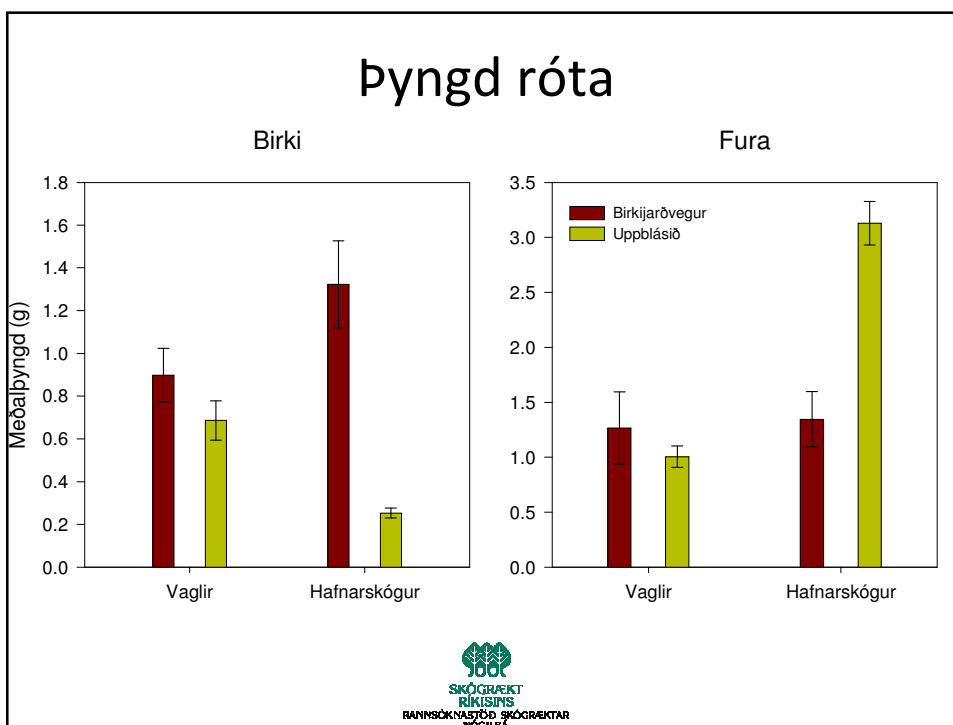
- Asksveppir og *Hebeloma* tegundir ríkjandi
- Meiri fjölbreytni en á furu



Þyngd plöntu



Þyngd róta



Samantekt

- Fura virðist öflugri í myndun svepprótar en birki
 - Sérstaklega áberandi í uppblásnum jarðvegi
- Fleiri svepprótartegundir finnast á birki en furu
- Furan er öflugri í uppblásnum jarðvegi en birki
 - Svepprótarmyndun??